

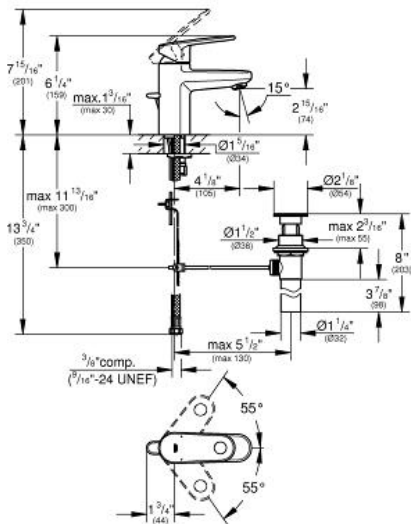
# EUROPLUS Lavatory Centerset S-Size

MODEL # 33170002

Pure Freude an Wasser



GROHE America, Inc | 200 North Gary Avenue, Suite G, Roselle, IL 60172  
Phone: +1 (800) 444-7643 | Fax: +1 (800) 225-2778 | us-customerservice@grohe.com



### Product Description: Lavatory Centerset S-Size

#### Standard Specification:

- Single hole installation
- **GROHE SilkMove** 35 mm ceramic cartridge
- Adjustable flow rate limiter
- Adjustable minimum flow rate approx. 1.0 gpm
- Temperature limiter
- **GROHE StarLight®** finish
- **SpeedClean** flow control
- Pop-up waste set
- Stainless steel flex lines
- Max Flow Rate: 1.5 gpm (5.7 L/min)

#### Applicable Codes & Standards:

- Energy Policy Act of 1992
- NSF 61
- ASME A112.18.1/CSA B125.1
- US Federal and State material regulations
- EPA WaterSense®
- ICC/ANSI A117.1

#### Color:

- 33170002 002 chrome