

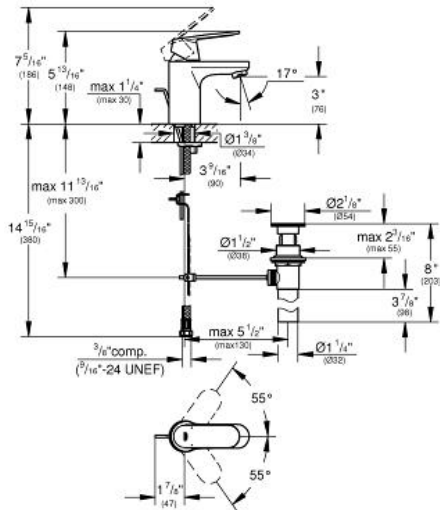
# EUROSMART COSMOPOLITAN Lavatory Centerset S-Size

MODEL # 32875000

Pure Freude an Wasser



GROHE America, Inc | 200 North Gary Avenue, Suite G, Roselle, IL 60172  
Phone: +1 (800) 444-7643 | Fax: +1 (800) 225-2778 | us-customerservice@grohe.com



### Product Description: Lavatory Centerset S-Size

#### Standard Specification:

- Single hole installation
- **GROHE SilkMove** 35 mm ceramic cartridge
- **GROHE StarLight®** finish
- Adjustable flow rate limiter
- Flow control
- 1 1/4" pop-up waste set
- Stainless steel flex lines
- **GROHE QuickFix®** installation system with centering support
- Max Flow Rate: 1.5 gpm (5.7 L/min)

#### Applicable Codes & Standards:

- Energy Policy Act of 1992
- NSF 61
- ASME A112.18.1/CSA B125.1
- US Federal and State material regulations
- EPA WaterSense®
- ICC/ANSI A117.1

#### Color:

- 32875000 000 chrome